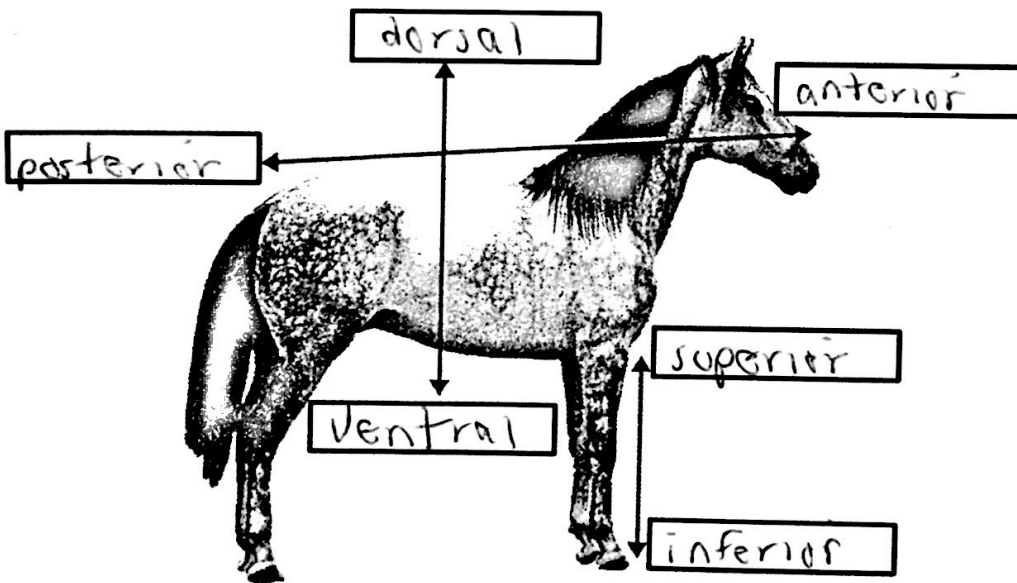
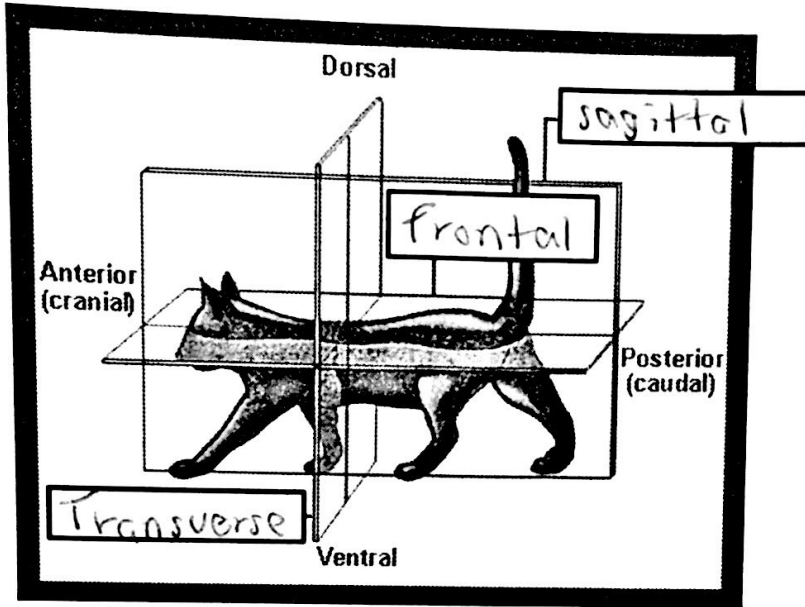


Name Wheatley

Date _____

Fetal Pig Dissection Review

- Be able to label an organism using the anatomical terminology (there will be a word bank)
- Fill in all boxes!



- Be able to label the parts of the fetal pig's anatomy, both internal and external
- Know the function of the organs:
 - Liver, lungs, pancreas, trachea, larynx, spleen, diaphragm, umbilical cord, large intestine, gallbladder
- Know how to determine the sex of a fetal pig

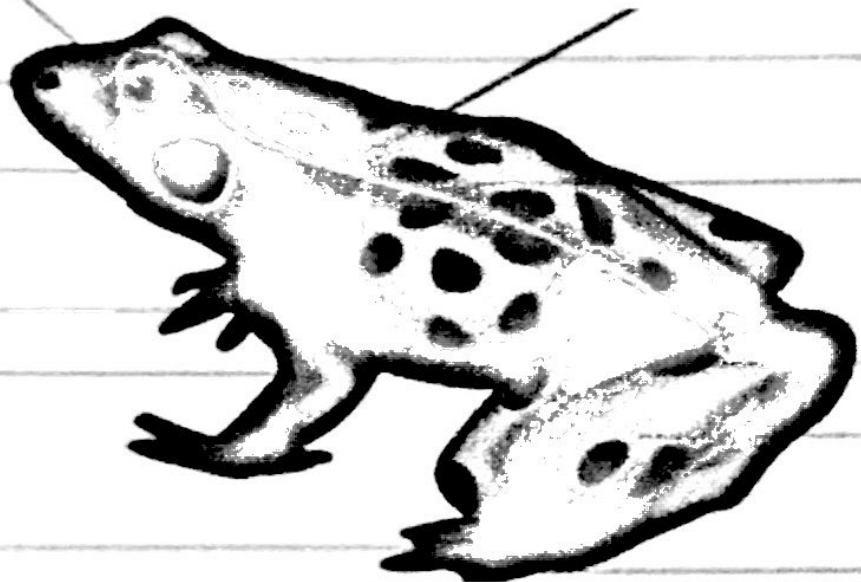
External Anatomy

MORPHOLOGY OF A FROG

nostril

tympanic
membrane

web



hind l

webb
fe

